

# Windchill® MPMLink™

## Improve Time-to-Market and Reduce Product Costs by Enabling Concurrent Product and Manufacturing Process Definition

Windchill MPMLink helps resolve the daily challenges that design and manufacturing engineers face in ensuring that process plans, manufacturing bill of materials (mBOMs) and work instructions accurately reflect the current engineering model, and that design decisions consider manufacturing best practices.

Transforming engineering designs into mBOMs and manufacturing processes has typically been a cumbersome process that had to wait until the design was completed. With the digital Manufacturing Process Management (MPM) capabilities of Windchill MPMLink, manufacturers can develop both the product and the manufacturing process definition concurrently, thus enabling you to reduce product cost, improve accuracy of manufacturing deliverables, and shorten development cycle time.

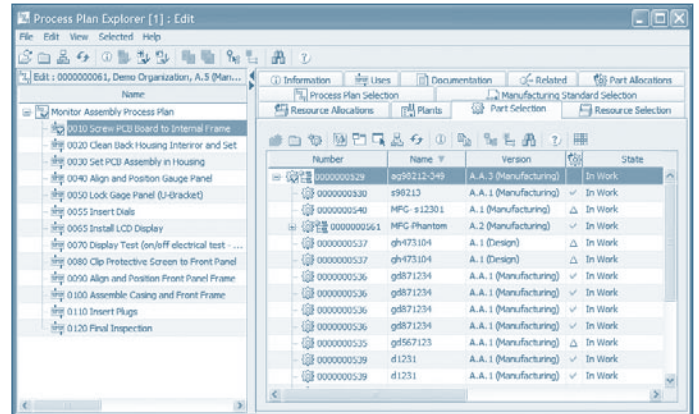
### Key Benefits

#### Reduce Time-to-Market

- Enable concurrent product and manufacturing process definition by managing digital manufacturing process plan definitions in the same system used by the design team
- Reduce late-stage changes requested by Manufacturing by providing manufacturing engineers with early access to design information
- Reduce the time required to create manufacturing engineering deliverables through digital modeling and content management of manufacturing process definitions

#### Enhance Efficiency of Manufacturing Engineers

- Associatively link mBOMs to the source engineering design information, so that mBOMs always reflect Engineering's current design
- Digitally author and manage manufacturing process plans and the associated resources, instead of relying on inefficient, paper-based tools
- Improve manufacturing process consistency by capturing and sharing manufacturing knowledge, regardless of location or time zone, using enterprise-wide collaboration
- Enable reuse of standardized and normalized processes and resources, thus avoiding data duplication



Use Windchill MPMLink to create digital process plans.

### Lower the Cost of Changes

- Increase efficiency by providing an integral change management system that supports both Engineering and Manufacturing needs
- Facilitate cost-effective design decisions by increasing engineering visibility into the potential manufacturing impact of a change

### Improve Production Ramp-up and Productivity

- Dynamically generate accurate work instructions with embedded 2D and 3D product illustrations
- Accelerate implementation of change in manufacturing deliverables
- Efficiently optimize manufacturing processes with visual configuration tools
- Identify required design changes earlier in the development lifecycle and include timely feedback from Manufacturing

### Reduce Scrap and Rework

- Eliminate discrepancies between the latest process definition and the work instructions used on the shop floor
- Effectively and efficiently manage the propagation of changes from design to manufacturing deliverables

