

# Windchill® Integration for Rational® ClearCase®

## Extending Windchill to the Software Configuration Management Environment

Combine the power of Windchill collaboration and control with IBM's Rational ClearCase to create a complete record of all product content.

Windchill Integration for Rational ClearCase enables a key link between software and ECAD/MCAD data. With this integrated solution, companies can gain a strategic advantage by managing software source code within structured product configurations in a single enterprise product vault. A product's software components can now be treated similarly to other product content with consistent processes such as Change Management and Configuration Management.

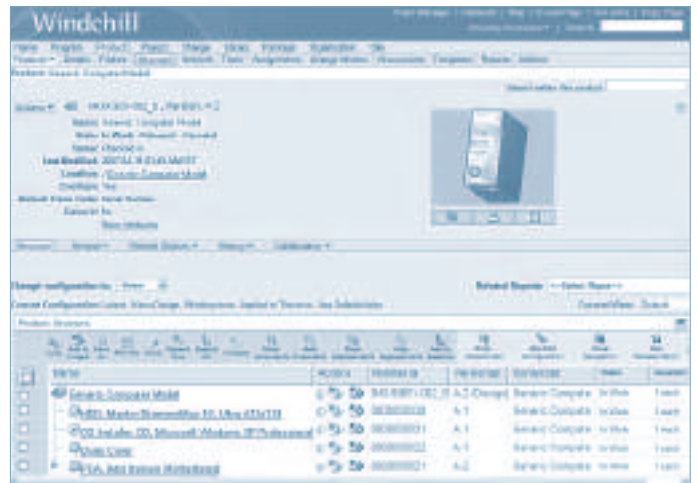
### Key Benefits

**Reduce Process Errors:** By establishing a single source of product information that includes the synchronization of software with mechanical and electrical designs, Windchill Integration for Rational ClearCase reduces process errors by eliminating mistakes associated with duplicate or incomplete product information. Software development teams can now be part of the product requirements cycle, thus gaining an early understanding of the product's quality definitions, and appropriately designing software right-the first time.

**Improve Time-to-Market:** By enabling better management of change and design inter-dependencies across different domains, users can diminish the time it takes to coordinate and implement a change. Development time is also reduced by allowing design engineers to understand the impact of software design early in the product lifecycle.

**Support Global Product Development:** Software development is often done a different location than mechanical and electrical design. By enabling software teams to integrally participate in the design process, you can improve management of the highly dynamic software development process, regardless of location.

**Increase Software Engineer Efficiency:** Software developers can utilize both the ClearCase and Windchill environments, whichever is most appropriate to the task. And, by using the same enterprise PLM (Product Lifecycle Management) system, the software development team can be immediately aware of any design changes and their related work impacts.



With Windchill Integration for Rational ClearCase, software is now associated with the complete product structure.

### Key Features

#### Integral Product Data Management

- Manage and control software within a single source of product content
- Securely vault all software using check-in/check-out, history, search and access control
- Automate the publishing of software builds into Windchill at critical process checkpoints
- Facilitate processes such as Change and Configuration Management, Manufacturing Process Management, and Supplier Management
- Synchronize software development with the overall product development process
- Browse directly into the ClearCase system from within the Windchill environment

## Key Features (cont.)

### Cross-discipline Change Management Process

- Communicate and reconcile required changes across software disciplines
- Track and assess the impact of product changes on software development
- Ensure that relevant artifacts are used for testing new product configurations
- Manage change as it relates to software components in the product structure, as part of the enterprise change management process

### Configuration Management and Traceability

- Track and manage versions of software that are kitted with particular versions of the product
- Archive software configurations for traceability, including source code configurations and software builds
- Link specific versions of executables or binaries and related artifacts in ClearCase to specific product configurations
- Relate product software components with specific hardware configurations, for testing and manufacturing traceability

### Software Design Collaboration

- Collaborate with globally dispersed software development teams
- Monitor software development projects while capturing valuable process metrics for industry standards compliance
- Provide controlled access to software-related intellectual property
- Track and manage key software development processes such as design specifications, software peer reviews, test plans and approval routings
- Allow multiple ClearCase systems to be connected to a specific set of Windchill products or projects

### Platform Specifications\*

- Prerequisite: Windchill® PDMLink® or Windchill® ProjectLink™
- Server Operating Systems
  - Microsoft Windows: Windows 2003 Server (32-bit and 64-bit)
  - Unix: Solaris, HP-UX, AIX
  - Linux (64-bit): Red Hat Enterprise Linux 4
- IBM Rational ClearCase environments
  - ClearCase: v2003.06.10 or later, 7.0 or later
  - Microsoft Windows: XP Professional, 2003 Server
- Browser: Internet Explorer v 6.0 and 7.0, Mozilla Firefox v2.0
- Database: Oracle 10g and SQL Server 2005
- Languages: English, Chinese (Traditional), Chinese (Simplified), French, German, Italian, Japanese, Korean, Spanish

For up-to-date platform support information, please visit [www.ptc.com/partners/hardware/current/support.htm](http://www.ptc.com/partners/hardware/current/support.htm)

NOTE: The timing of any product release, including any features or functionality, is subject to change at PTC's discretion.

©2008, Parametric Technology Corporation (PTC). All rights reserved. Information described herein is furnished for informational use only, is subject to change without notice, and should not be construed as a guarantee, commitment, condition, or offer by PTC. PTC, the PTC logo, Windchill and all PTC product names and logos are trademarks or registered trademarks of PTC and/or its subsidiaries in the United States and in other countries. All other product or company names are property of their respective owners. Rational ClearCase and IBM are registered trademarks of IBM Corporation.